

# USING CSS FOR LAYOUT

## BACKGROUND: BOXES & DIVS

To use CSS for layout:

1. Identify areas on page (Header, footer, content, sidebar, etc.)
2. Use div tags for each area <div id="footer"> (Can nest div tags)
3. Use CSS to style divs - create an *id selector* for each

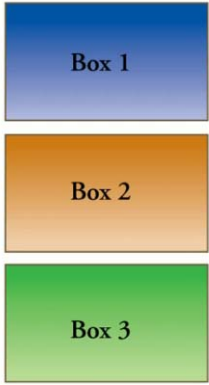
Understand **box model** -- Vertical margins collapse

### Positioning

- Normal Document Flow
- Absolute (top left of parent container is zero point)
- Relative - nudge elements without breaking document flow

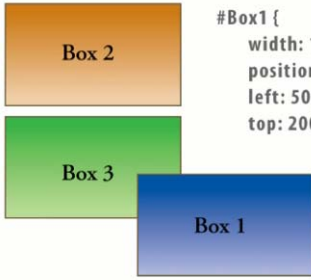
### ABSOLUTE POSITIONING

**normal flow**



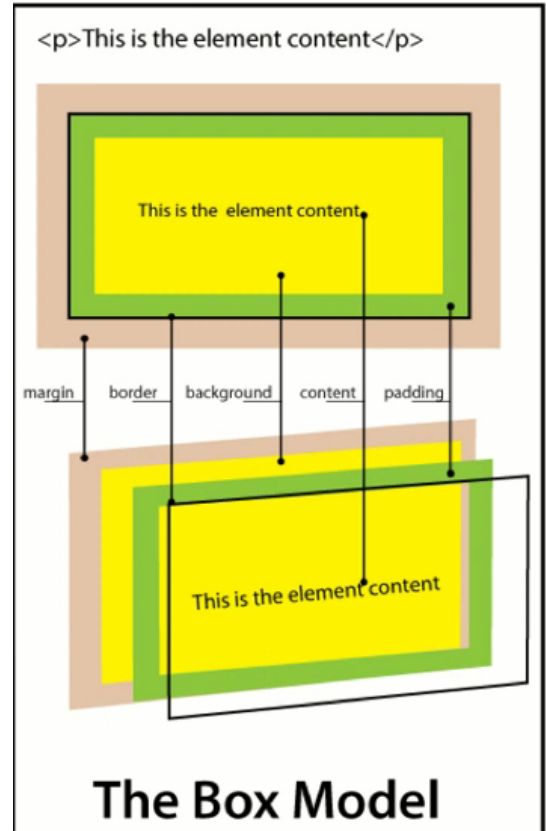
Box 1  
Box 2  
Box 3

```
#Box1 {  
width: 100px;  
position: absolute;  
left: 50px;  
top: 200px;}
```



Box 2  
Box 3  
Box 1

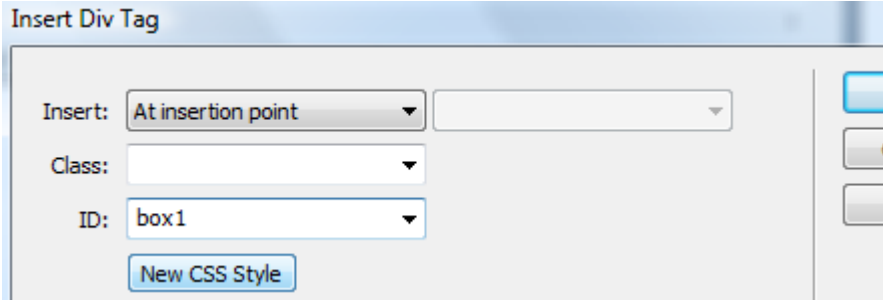
Box 1 uses absolute positioning. Top and left properties move it down and to the right. Other elements react as if Box 1 does not exist, moving up to take its position in normal document flow. Due to its new position, Box 1 now overlaps Box 3. Any change in Box 1 content will be ignored by other elements on the page.



## INSERTING AND STYLING DIV TAGS

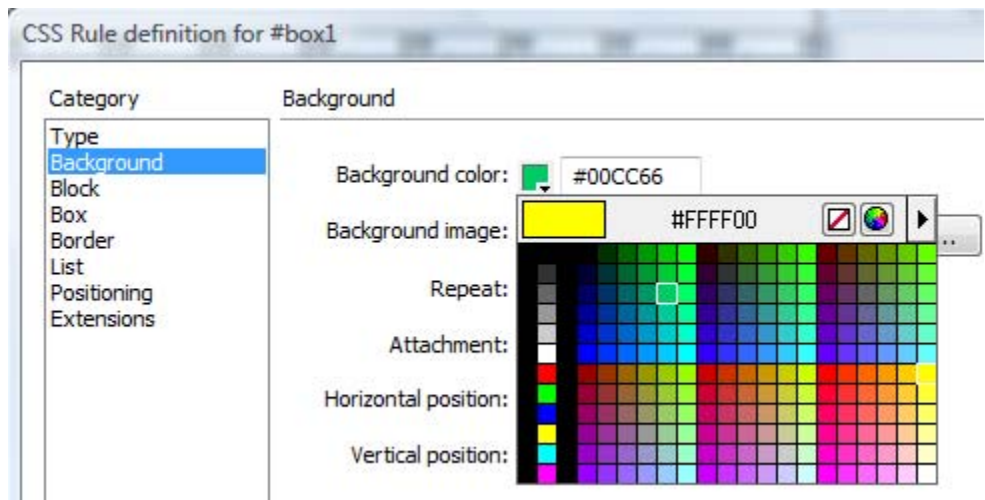
To add a div tag in Dreamweaver, use the **Insert Div Tag** button in the Common Insert panel.

Then specify the name of the id selector in the dialog box:

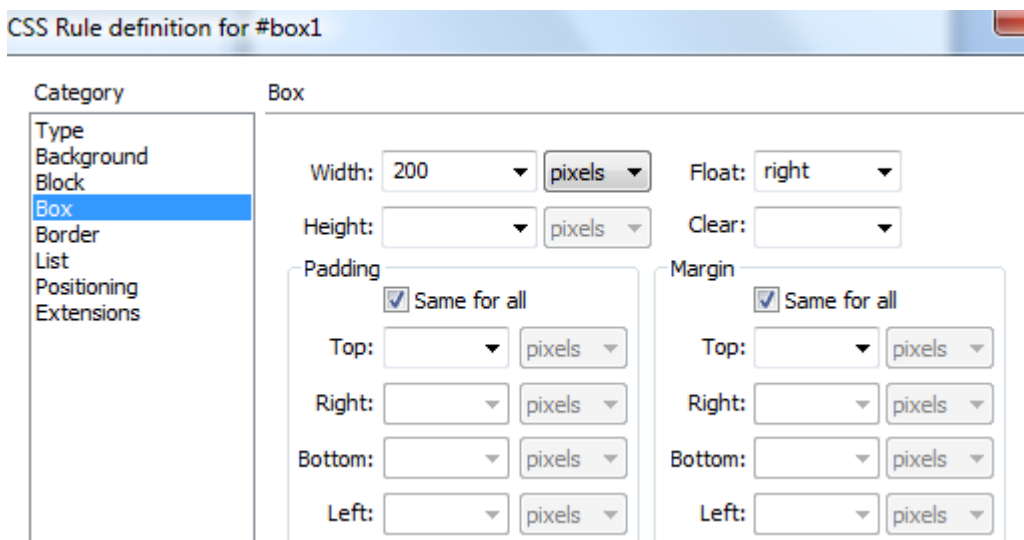


Click the **New CSS Style** button so Dreamweaver will create the id selector for you. Then you will see the dialog box that allows you to set a background color.

You can use other sections of the dialog box to style borders and more.



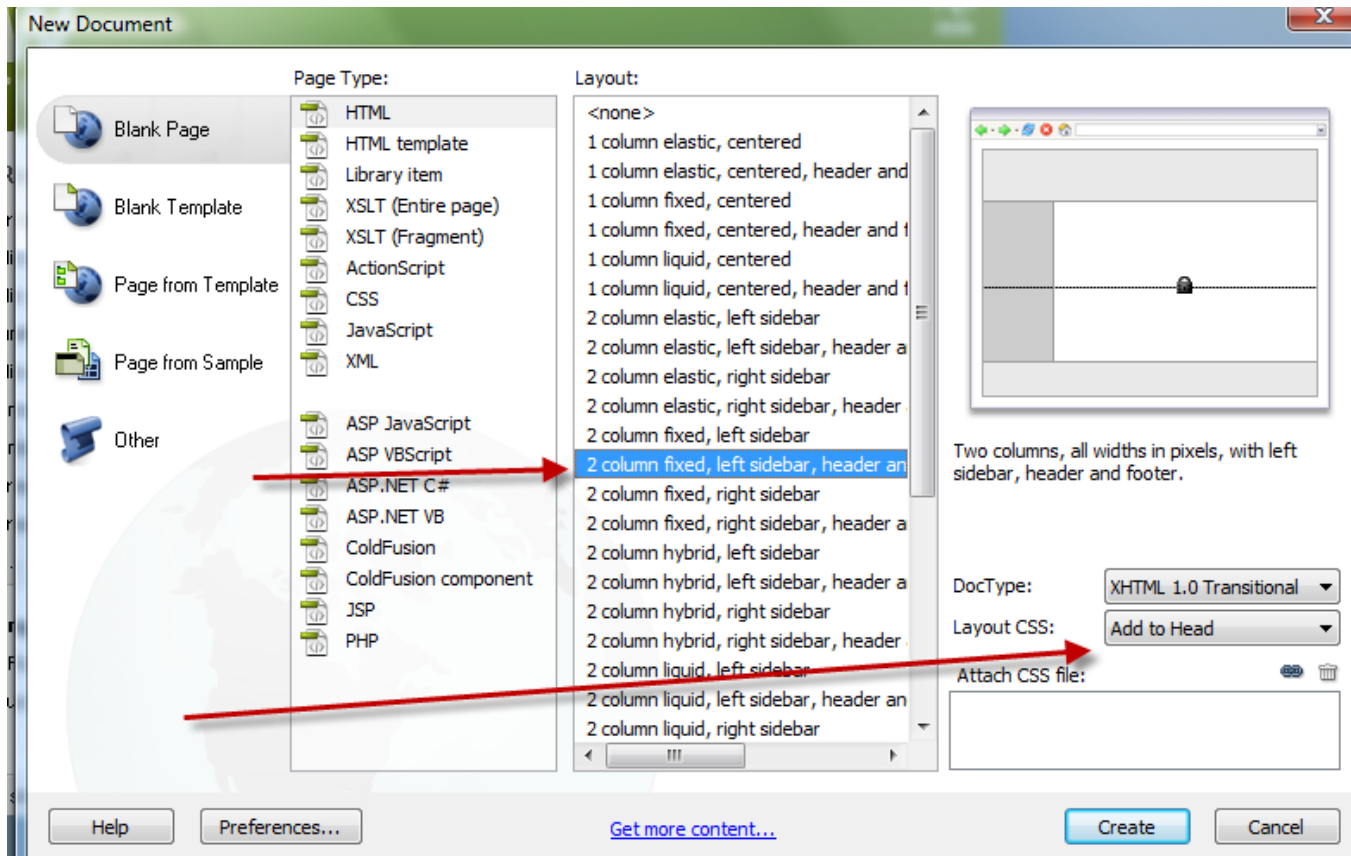
The **Box** section allows you to set dimensions, padding, float, etc.



## USING DREAMWEAVER CSS LAYOUTS

Select **File** -> **New** to see a list of CSS Layouts. Select which ever layout works for your needs.

Notice you can embed the styles (**Add to Head**) or create an external CSS file (**Create New File**).



Be sure to **SAVE** your file right away.

Click inside a div and look at the quick tag selector at the bottom of the design window to see the id for the div. Notice that container div surrounds the other divs.

Use the CSS panel to change attributes for the div.